

中量型離心機 Medium Capacity Type



CN-350

特點：

- 採用無刷馬達。
- LCD數位面板，具轉速、離心力之雙重切換、設定及顯示功能。
- 10組記憶系統，可預先設定常用參數。
- 不平衡斷電、過載、故障指示安全防護裝置。

Feature :

- Brushless Motor
- LCD digital panel with RPM & RCF switch, setting & display functions
- 10 memory programs for presetting parameters
- Auto power off for rotor imbalance, overload, error indication and safety protection device

Model	CN-350
轉速 Speed (rpm)	500~6,000
最大離心力 Max. RCF (xg)	4,270
最大容量 Max. Capacity (ml)	400
定時器 Timer (min:sec)	99:59
重量 Weight (kg)	20.5
尺寸 Size (W x L x H mm)	360 x 480 x 340
電源 Power	AC 110/220V, 50/60Hz

● 離心試管另購 ● Tubes not included.



CN-3302

特點：

- 採用無刷馬達。
- 數位式轉速顯示。
- 不平衡斷電、過載、故障指示安全防護裝置。
- 轉速及離心力設定功能。

Feature :

- Brushless Motor
- Digital speed display
- Auto power off for rotor imbalance, overload, error indication and safety protection device
- Speed and RCF settings

Model	CN-3302
轉速 Speed (rpm)	500~6,000
最大離心力 Max. RCF (xg)	4,270
最大容量 Max. Capacity (ml)	400
定時器 Timer (min:sec)	99:59
重量 Weight (kg)	18
尺寸 Size (W x L x H mm)	360 x 480 x 340
電源 Power	AC 110/220V, 50/60Hz

● 離心試管另購 ● Tubes not included.

■ Rotor sets for CN-350, CN-3302



1.5ml x 48pcs



6ml x 36pcs



6ml x 40pcs



10ml x 24pcs



15ml x 8pcs



15ml x 12pcs
(plastic)



15ml x 16pcs



50ml x 4pcs
(plastic)



50ml x 4pcs
(glass)



100ml x 4pcs

Rotor	Capacity (ml x pcs)	Tube Size (Ø x L) mm	Max. Speed (rpm)	Max. RCF (xg)
RS-50	1.5ml x 48	9.5~10.5 x 38~50	3,500	1,320
	6ml x 36	11~12 x 85~106	3,500	1,940
	6ml x 40	11~12.5 x 63~87	3,500	1,630
	10ml x 24	14~15.5 x 87~108	3,500	1,980
	15ml x 8	15~17.3 x 90~115	3,500	1,980
	15ml x 12 (plastic)	15~17 x 89~115	3,500	2,000
	15ml x 16	14~16.6 x 90~110	3,500	1,980
	50ml x 4 (plastic)	26.5~29.5 x 90~120	4,000	2,560
	50ml x 4 (glass)	32~35 x 90~112	4,000	2,490
	100ml x 4	42~45 x 97~112	3,500	1,980



1.5ml x 48pcs



6ml x 36pcs



6ml x 40pcs



10ml x 24pcs



15ml x 8pcs



15ml x 12pcs
(plastic)



15ml x 16pcs



50ml x 4pcs
(plastic)



50ml x 4pcs
(glass)



100ml x 4pcs

Rotor	Capacity (ml x pcs)	Tube Size (Ø x L) mm	Max. Speed (rpm)	Max. RCF (xg)
RS-55	1.5ml x 48	9.5~10.5 x 38~50	3,500	1,320
	6ml x 36	11~12 x 85~106	3,500	1,940
	6ml x 40	11~12.5 x 63~87	3,500	1,630
	10ml x 24	14~15.5 x 87~108	3,500	1,980
	15ml x 8	15~17.3 x 90~120	4,500	3,270
	15ml x 12 (plastic)	15~17 x 89~120	3,500	2,000
	15ml x 16	14~16.6 x 90~120	4,500	3,270
	50ml x 4 (plastic)	26.5~29.5 x 90~120	5,000	4,000
	50ml x 4 (glass)	32~35 x 90~112	5,000	3,890
	100ml x 4	42~45 x 97~112	4,500	3,270

■ Rotor sets for CN-350, CN-3302



RA-1024



RA-1508



RA-1512H



RA-1516

Rotor	Capacity (ml x pcs)	Tube Size (Ø x L) mm	Max. Speed (rpm)	Max. RCF (xg)
RA-1024	10ml x 24	15~17.3 x 90~107	3,500	1,760
RA-1508	15ml x 8	14~16.6 x 92~130	6,000	3,750
RA-1512H	15ml x 12	14~16.6 x 92~122	6,000	4,270
RA-1516	15ml x 16	15~17.3 x 90~112	4,000	2,220



RA-5004



RA-5006



RA-5008

Rotor	Capacity (ml x pcs)	Tube Size (Ø x L) mm	Max. Speed (rpm)	Max. RCF (xg)
RA-5004	50ml x 4	27.5~29.5 x 84~135	6,000	3,870
RA-5006	50ml x 6	27.5~29.5 x 84~135	6,000	3,870
RA-5008	50ml x 8	27.5~29.5 x 84~116	6,000	4,270

大容量型離心機 High Capacity Type



CN-650

特點：

- 採用無刷馬達。
- LCD數位面板，具轉速、離心力之雙重切換、設定及顯示功能。
- 10組記憶系統，可預先設定常用參數。
- 不平衡斷電、過載、故障指示安全防護裝置。

Feature：

- Brushless Motor
- LCD digital panel with RPM & RCF switch, setting & display functions
- 10 memory programs for pre-setting parameters
- With auto power-off safety devices included rotor imbalance, overload, and error indication

Model	CN-650
轉速 Speed (rpm)	500~6,000
最大離心力 Max. RCF (xg)	5,760
最大容量 Max. Capacity (ml)	1,000
定時器 Timer (min:sec)	99:59
重量 Weight (kg)	40
尺寸 Size (W x L x H mm)	450 x 560 x 380
電源 Power	AC 110/220V, 50/60Hz

● 離心試管另購 ● Tubes not included.



CN-5302

特點：

- 採用無刷馬達。
- 數位式轉速顯示。
- 不平衡斷電、過載、故障指示安全防護裝置。
- 轉速及離心力設定功能。

Feature：

- Brushless Motor
- Digital speed display
- With auto power-off safety devices included rotor imbalance, overload, and error indication
- Speed and RCF settings

Model	CN-5302
轉速 Speed (rpm)	500~6,000
最大離心力 Max. RCF (xg)	5,760
最大容量 Max. Capacity (ml)	1,000
定時器 Timer (min:sec)	99:59
重量 Weight (kg)	34
尺寸 Size (W x L x H mm)	450 x 560 x 380
電源 Power	AC 110/220V, 50/60Hz

● 離心試管另購 ● Tubes not included.

Rotor sets for CN-650 CN-5302



RS-9602



RS-2504

Rotor	Capacity (ml x pcs)	Tube Size (Ø x L) mm	Max. Speed (rpm)	Max. RCF (xg)
RS-9602	96 well plate x 4	126 ~ 129 x 83 ~ 86	2,500	1,180
RS-2504	250ml x 4	61 ~ 65.5 x 90 ~ 127	3,500	2,320



RA-1512H



RA-5008

Rotor	Capacity (ml x pcs)	Tube Size (Ø x L) mm	Max. Speed (rpm)	Max. RCF (xg)
RA-1512H	15ml x 12	14~16.6 x 92~122	6,000	4,270
RA-5008	50ml x 8	27.5~29.5 x 84~116	6,000	4,270



RS-50



15ml x 8pcs



15ml x 16pcs



50ml x 4pcs
(plastic)



50ml x 4pcs
(glass)



100ml x 4pcs

Rotor	Capacity (ml x pcs)	Tube Size (Ø x L) mm	Max. Speed (rpm)	Max. RCF (xg)
RS-50	15ml x 8	15~17.3 x 90~115	4,500	3,270
	15ml x 16	14~16.6 x 90~110	4,500	3,270
	50ml x 4 (plastic)	26.5~29.5 x 90~120	5,500	4,840
	50ml x 4 (glass)	32~35 x 90~112	4,000	2,490
	100ml x 4	42~45 x 97~112	5,000	4,030



RS-55A



15ml x 8pcs



15ml x 16pcs



50ml x 4pcs
(plastic)



50ml x 4pcs
(glass)



100ml x 4pcs

Rotor	Capacity (ml x pcs)	Tube Size (Ø x L) mm	Max. Speed (rpm)	Max. RCF (xg)
RS-55A	15ml x 8	15~17.3 x 90~115	5,000	4,030
	15ml x 16	14~16.6 x 90~120	5,000	4,030
	50ml x 4 (plastic)	26.5~29.5 x 90~120	6,000	5,760
	50ml x 4 (glass)	32~35 x 90~112	5,000	3,890
	100ml x 4	42~45 x 97~112	5,000	4,030

Rotor sets for CN-650, CN-5302



RS-100



6ml x 56pcs



10ml x 48pcs



15ml x 16pcs



15ml x 32pcs



50ml x 4pcs
(plastic)



50ml x 4pcs
(glass)



50ml x 8pcs
(plastic)



50ml x 8pcs
(glass)

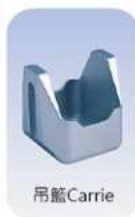


100ml x 4pcs

Rotor	Capacity (ml x pcs)	Tube Size (Ø x L) mm	Max. Speed (rpm)	Max. RCF (xg)
RS-100	6ml x 56	10~12.5 x 50~105	3,500	2,160
	10ml x 48	13~15.5 x 50~107	3,500	2,160
	15ml x 16	14~16.6 x 92~130	3,500	2,290
	15ml x 32	14~16.6 x 90~116	3,500	2,290
	50ml x 4(plastic)	26.5~29.5 x 90~137	5,000	4,640
	50ml x 4(glass)	32~35 x 86~133	4,000	2,880
	50ml x 8(plastic)	26.5~29.5 x 90~127	3,500	2,280
	50ml x 8(glass)	32~35 x 86~120	3,500	2,210
	100ml x 4	42~45.5 x 96~130	4,000	2,970



RS-250



吊籃Carrie



1.5ml x 96pcs



6ml x 112pcs



10ml x 80pcs



15ml x 40pcs
(plastic)



15ml x 48pcs



50ml x 16pcs
(plastic)



250ml x 4pcs

Rotor	Capacity (ml x pcs)	Tube Size (Ø x L) mm	Max. Speed (rpm)	Max. RCF (xg)
RS-250	1.5ml x 96	8~10.5 x 41~90	3,500	2,360
	6ml x 112	9.5~11.5 x 60~110		
	10ml x 80	13.5~15.5 x 60~105		
	15ml x 40(plastic)	14~16 x 60~120		
	15ml x 48	15~17 x 60~117		
	50ml x 16(plastic)	27.5~29.5 x 60~117		
	250ml x 4	58~61.5 x 66~127		

高速型離心機 High Speed Type



特點：

- LCD數位面板，具轉速、離心力之雙重切換、設定及顯示功能。
- 10組記憶系統，可預先設定常用參數。
- 不平衡斷電、過載、故障指示安全防護裝置。

Feature：

- LCD digital panel with RPM & RCF switch, setting & display functions
- 10 memory programs for pre-setting parameters
- With auto power-off safety devices included rotor imbalance, overload, and error indication

CN-10001

Model	CN-10001
轉速 Speed (rpm)	1,000~10,000
最大離心力 Max. RCF (xg)	10,630
最大容量 Max. Capacity (ml)	400
定時器 Timer (min:sec)	99:59
重量 Weight (kg)	20
尺寸 Size (W x L x H mm)	360 x 480 x 340
電源 Power	AC 110/220V, 50/60Hz

● 離心試管另購 ● Tubes not included.

Rotor sets for CN-10001



Rotor	Capacity (ml x pcs)	Tube Size (Ø x L) mm	Max. Speed (rpm)	Max. RCF (xg)
RACH-1508	15ml x 8	15~17.5 x 92~122	10,000	10,630
RA-1508-1	15ml x 8	15~17.3 x 92~122	8,000	6,660
RA-1512H-1	15ml x 12	15~17.3 x 92~122	6,500	5,010
RA-5004	50ml x 4	27.5~29.5 x 84~117	7,500	6,040
RA-5006	50ml x 6	27.5~29.5 x 84~117	7,000	5,260
RA-5008	50ml x 8	27.5~29.5 x 84~117	6,500	5,010