

# C1000 Touch Thermal Cycler

## Specifications

### Amplification

Bulletin 6095

The C1000 Touch Thermal Cycler provides superb thermal performance for fast, reliable results. This fully modular platform supports interchangeable reaction modules, including two optical modules for real-time PCR, that swap in seconds without requiring tools. Equipped with a large state-of-the-art touch screen, the C1000 Touch Cycler offers a choice of programming methods, including graphical and automatic (using the protocol autowriter).

- Interchangeable reaction modules, including 5-color CFX96 optical, 4-color CFX384 optical, gradient-enabled dual 48/48-well fast, gradient-enabled 96-well fast, gradient-enabled 96–deep well, and gradient-enabled 384-well reaction modules
- USB ports that support peripherals, such as storage device and mouse
- Optional PC control and networking capability for up to 32 systems enable the ultimate in high throughput

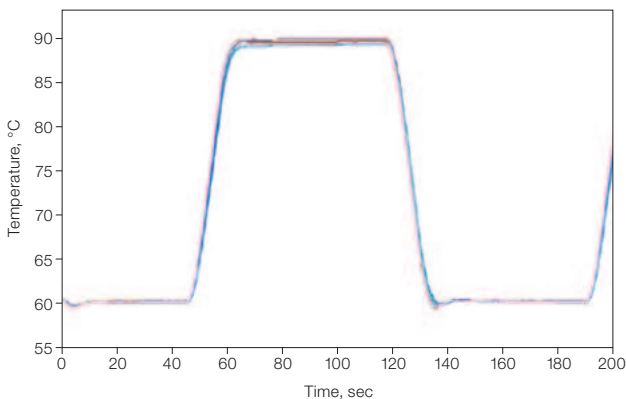


### Specifications

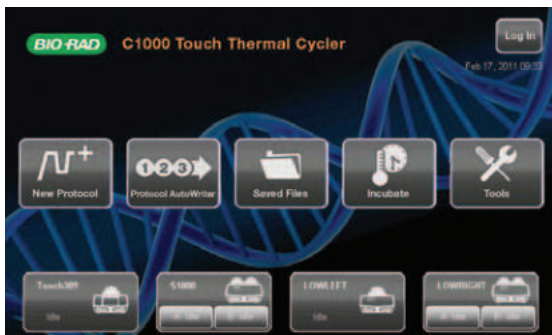
Thermal Cycler				
Input power	Up to 850 W, maximum	Programming options	Step-based graphical and automatic	
Frequency	50–60 Hz, single phase	Security features	Optional log-in required mode for regulated environments	
Display	8.5 in. LCD display and touch screen	Reporting	Exportable run logs, system error logs	
Ports	5 USB A, 1 USB B	Onboard software	Windows CE 6.0	
Fuses	Two 10 A, 250 V, 5 x 20 mm	PC compatibility	Windows XP or higher	
Memory	>1,000 typical programs onboard; unlimited with USB flash drive	USB peripheral compatibility	Mouse, USB flash drive, barcode reader	
Dimensions (W x D x H)	33 x 46 x 20 cm (13 x 18 x 8 in.)	Real-time PCR upgrade	6-channel, 5-color CFX96 or 5-channel, 4-color CFX384 optical reaction module	
Weight	10 kg (23 lb)	Instant incubation	Yes	
Temperature control modes	Calculated and block			
PCR license	Yes			
Reaction Modules				
	96-Well Fast	96-Deep Well	Dual 48/48 Fast	384-Well
Sample capacity	96 x 0.2 ml tubes or 1 x 96-well plate	96 x 0.2 ml tubes, 48 x 0.5 ml tubes, or 1 x 96-well plate	2 x 48 x 0.2 ml tubes or 2 x 48-well plates	1 x 384-well plate
Maximum ramp rate	5°C/sec	2.5°C/sec	4°C/sec	2.5°C/sec
Average ramp rate	3.3°C/sec	2°C/sec	3°C/sec	2°C/sec
Temperature range	0–100°C	0–100°C	0–100°C	0–100°C
Temperature accuracy	±0.2°C of programmed target at 90°C	±0.2°C of programmed target at 90°C	±0.2°C of programmed target at 90°C	±0.2°C of programmed target at 90°C
Temperature uniformity	±0.4°C well-to-well within 10 sec of arrival at 90°C	±0.4°C well-to-well within 10 sec of arrival at 90°C	±0.4°C well-to-well within 10 sec of arrival at 90°C	±0.4°C well-to-well within 10 sec of arrival at 90°C
Gradient capability	Yes	Yes	Yes	Yes
Gradient				
Gradient range	30–100°C			
Temperature differential range	1–24°C			



**Quick and easy protocol programming.** The protocol autowriter in the cycler's onboard software can automatically suggest a fast temperature protocol based on input parameters. Suggested protocol is based on standard PCR guidelines, with hot-start, initial denaturation, annealing, and extension steps. Further reductions of run times are achieved by minimizing the number of steps and cycles, incubation times, and temperature differentials.



**Rapid arrival at target temperature and superior uniformity.** Graph shows temperature measured by probes in 15 wells across the sample block of a C1000 Touch Thermal Cycler. Traces are nearly indistinguishable due to the tight uniformity. Note the consistent ramp rate throughout heating and cooling. 1000-series Thermal Cyclers exhibit high average ramp rates, rapid settling time, and tight thermal uniformity throughout the ramp, resulting in rapid arrival at target temperature and enabling faster protocol run times.



**Multi-instrument control.** The C1000 Touch Cycler can control multiple thermal cyclers using a single interface.

**BIO-RAD**

**Bio-Rad  
Laboratories, Inc.**

Life Science  
Group

**Web site** bio-rad.com **USA** 1 800 424 6723 **Australia** 61 2 9914 2800 **Austria** 43 01 877 89019 **Belgium** 32 03 710 53 00 **Brazil** 55 11 3065 7550  
**Canada** 1 905 364 3435 **China** 86 21 6169 8500 **Czech Republic** 36 01 459 6192 **Denmark** 45 04 452 10 00 **Finland** 35 08 980 422 00  
**France** 33 01 479 593 00 **Germany** 49 089 3188 4393 **Hong Kong** 852 2789 3300 **Hungary** 36 01 459 6190 **India** 91 124 4029300  
**Israel** 972 03 963 6050 **Italy** 39 02 49486600 **Japan** 81 3 6361 7000 **Korea** 82 2 3473 4460 **Mexico** 52 555 488 7670 **The Netherlands** 31 0 318 540 666  
**New Zealand** 64 9 415 2280 **Norway** 47 0 233 841 30 **Poland** 36 01 459 6191 **Portugal** 351 21 4727717 **Russia** 7 495 721 14 04  
**Singapore** 65 6415 3188 **South Africa** 36 01 459 6193 **Spain** 34 091 49 06 580 **Sweden** 46 08 555 127 00 **Switzerland** 41 0617 17 9555  
**Taiwan** 886 2 2578 7189 **Thailand** 66 2 651 8311 **United Arab Emirates** 971 4 8187300 **United Kingdom** 44 01923 47 1301

## Ordering Information

Catalog #	Description
1841100	<b>C1000 Touch Thermal Cycler Chassis</b> , includes USB flash drive, power cord; does not include reaction module
1851148	<b>C1000 Touch Thermal Cycler with Dual 48/48 Fast Reaction Module</b> , includes C1000 Touch Thermal Cycler Chassis, dual 48/48 fast reaction module, USB flash drive
1851196	<b>C1000 Touch Thermal Cycler with 96-Well Fast Reaction Module</b> , includes C1000 Touch Thermal Cycler Chassis, 96-well fast reaction module, USB flash drive
1851197	<b>C1000 Touch Thermal Cycler with 96-Deep Well Reaction Module</b> , includes C1000 Touch Thermal Cycler Chassis, 96-deep well reaction module, USB flash drive
1851138	<b>C1000 Touch Thermal Cycler with 384-Well Reaction Module</b> , includes C1000 Touch Thermal Cycler Chassis, 384-well reaction module, USB flash drive
1840148	<b>Dual 48/48 Fast Reaction Module</b> , independent dual 48-well reaction module, fits C1000, C1000 Touch, and S1000 Thermal Cyclers, gradient enabled
1840196	<b>96-Well Fast Reaction Module</b> , fits C1000, C1000 Touch, and S1000 Thermal Cyclers, gradient enabled
1840197	<b>96-Deep Well Reaction Module</b> , fits C1000, C1000 Touch, and S1000 Thermal Cyclers, gradient enabled
1840138	<b>384-Well Reaction Module</b> , fits C1000, C1000 Touch, and S1000 Thermal Cyclers, gradient enabled
1845096	<b>CFX96 Optical Reaction Module</b> , for use with C1000 Touch Thermal Cycler Chassis, includes CFX Maestro Software, license for qbase+ Software, communication cable, reagents, consumables
1845384	<b>CFX384 Optical Reaction Module</b> , for use with C1000 Touch Thermal Cycler Chassis, includes CFX Maestro Software, license for qbase+ Software, communication cable, reagents, consumables
1708870	<b>iTaq DNA Polymerase</b> , 5 U/μl
1725301	<b>iProof High-Fidelity DNA Polymerase</b> , 2 U/μl, 100 U

Visit [bio-rad.com/PCRCyclers](http://bio-rad.com/PCRCyclers) for more information.

Bio-Rad is a trademark of Bio-Rad Laboratories, Inc. in certain jurisdictions. All trademarks used herein are the property of their respective owner.

