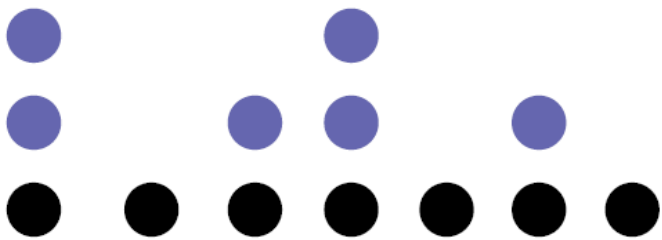


Rheosys LLC.  
1800 E. State St  
Hamilton NJ 08609  
USA

Tel. 210.568.9300  
Fax. 210.568.7454  
sales@rheosys.com  
www.rheosys.com

# VISCOPro+



# Rheosys

## Analytical Instruments

Rheometers. Viscometers. Temperature Controllers.

# The New VISCOPro+. High-Performance Rotational Viscometer for Research and Quality Control.



## VISCOPro+ Programmable Viscometer

The ViscoPro+ Viscometer is a high performance rotational viscometer capable of both steady shear and yield stress testing. The ViscoPro+ can be interfaced and controlled with our Windows based research software "micra", turning the ViscoPro+ into a fully featured Rheometer.

Combined with the High Temperature Melts Cell option (Image below), the VISCOPro+ can be used to measure high temperature materials such as polymer melts and asphalt cements.



### Technical Specifications

Angular Velocity	0.01 to 100 rad/s
Shear Rate Range	Measuring System Dependent
Torque Range	0.001 to 10 mNm
Shear Stress Range	Measuring System Dependent
Temperature Range	Temperature Option Dependent
User Selectable Speeds	10,000 discrete steps
Measuring Systems Included	25mm & 14mm Co-Axial Cylinders

### Features

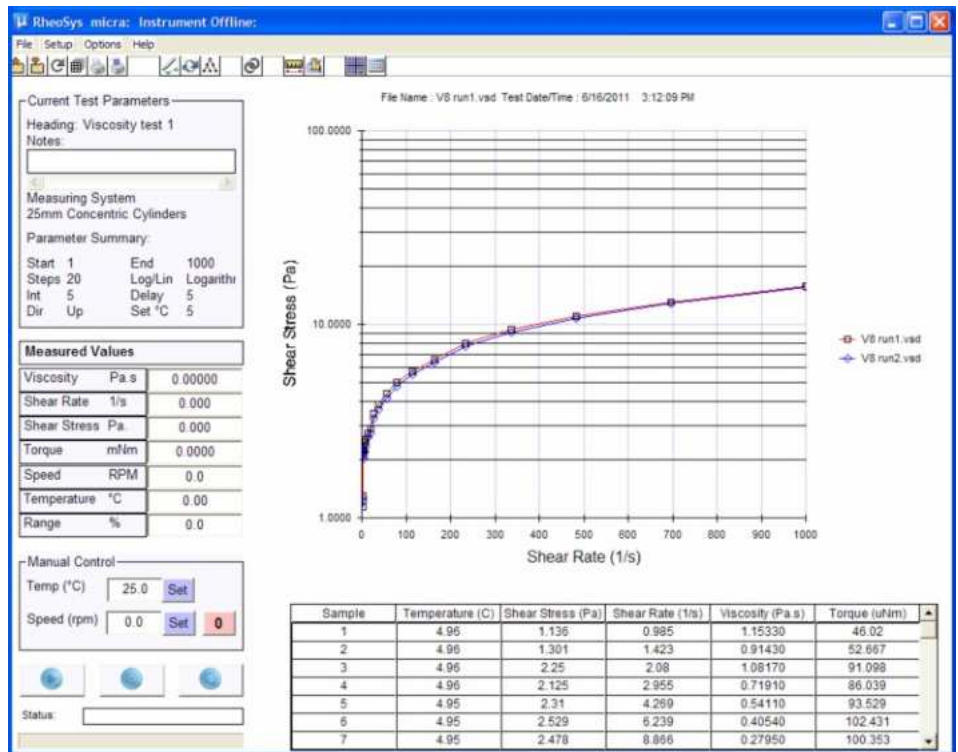
- ▶ Continuous Torque Sensing
- ▶ Quick release measuring system coupling
- ▶ 10,000 speeds
- ▶ Stand alone operation or PC Control
- ▶ Customizable LCD display
- ▶ Wide torque range up to 10mNm
- ▶ Wide speed range 0.1 to 1000 RPM
- ▶ High temperature Melts option. 50 - 350 °C for evaluation of Polymer melts, asphalt cements etc.

Automate sample testing by using our powerful Windows software. Micra can analyze data, generate plots to compare tests, and more.



## Features & Benefits

- Automates data collection.
- Creates a permanent record of each test.
- Comparison data sets can be entered.
- Add or remove variables from plot & table.
- Copy Graph or table to clipboard.
- Real time values displayed for % Torque Range, Torque (uNm), RPM, Viscosity, Shear Rate, Shear Stress, Temperature.
- Primary screen allows quick single point viscosity determination.
- Automated program control using the "test definition" window to rapidly create multiple step tests.
- User selectable Signal averaging options.
- Interactive Graph allows full control over displayed variables including scaling, symbol, color, view/hide data, Grid lines.
- Plot data available: % Torque, Torque (uNm), RPM, Viscosity, Shear Rate, Shear Stress, Temperature, Time, Sample.



For more information please visit our web site: [www.rheosys.com](http://www.rheosys.com)

Or contact us at:

Rheosys LLC, 1800 E. State St, Suite 155  
Hamilton NJ 08609. USA  
Tel. 210.568.9300 Fax. 210.568.7454

**Rheosys LLC**

1800 E.State Street Suite 132 Hamilton NJ 08609 Tel: (210) 568 9300 Fax: (210) 568 7454 [admin@rheosys.com](mailto:admin@rheosys.com)

[www.rheosys.com](http://www.rheosys.com)