



# Omni Bead Ruptor 12

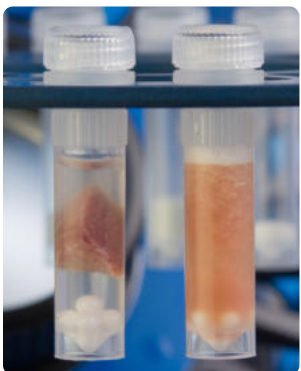
## Bead Mill Homogenizer

Part number: 19-050A

Ideally suited for nucleic acid, drug, protein, enzyme, and virus extractions.



- Includes snap-in tube carriage for 2 mL and 7 mL tubes:
- Holds 12 x 2 mL or 0.5 mL tubes and/or 4 x 7mL tubes
  - Includes semi-permanent ring



| Before (left) and after (right)

### Specifications

- Power rating:** 115-230V, 50/60 Hz
- Performance range:** 0.8 - 6.0 m/s in increments of 0.15 m/s
- Run time:** 1 second to 9:59 minutes
- Cycles:** 1-10
- Programs:** 99
- Processing volume:** 25  $\mu$ L to 6 mL
- Dimensions:** W: 15" (38.1 cm), D: 17" (43.2 cm), H: 13" (33.0 cm)
- Weight:** 65 lbs. (29 kg)
- Warranty:** One year
- Certification:** CE, UKCA

### Features

- Optimized tube motion with speeds up to 6 m/s
- Process up to 16 samples per cycle
- Convenient front loading design
- Locking safety lid
- Reproducible extraction of proteins, nucleic acids, and small molecules

