

A&D „q/V ¥> jB^{-a}¥ „f °¿Ø/J,Œfi~‡n^{-Ø}

¥»‡n^{-Ø} A¥, ' WINDOWS 95/98/ME/NT/2000

WinCT §@»j 'œ fi

¶ f,

1. •§>n P.2
 2. ¢tt_c t‡~ P.2
 3. fw,_s ¢B~J P.3
 4. ‡q«H‡s%ou¶¶}'l P.4
 5. fU‡n^{-Ø} ¢tt_c §@»j'œ P.4
- RSKEY P.4
- RSCOM P.8

A&D Company Limited.



LAB Online Exhibition



1. •§>n

f,,†n-Ø<O</F-N A&D „q/V ¥>»P¥« /§fiM,,†n-Ø (¤ fp: Microsoft Excell,Word, Outlook)†s%õ-M“ø†>p/§†n-Ø {fi iC

(1) RSKEY

“%- “œ/ ¥>/W,œfi~,fA¶’ e¤ ¥« “fiM,,†n-Ø/W/§ {fi iC
(„q,£¥i“-U« ¥O¤ /¥> ,fp» fCfLfi « /¥>/W“fCfL` §Y¥i)

(2) RSCOM

- i. fb> fi §,fi/U¥i“-œ/ ¥>,œfi~iC
- i. ¥i¤ » ¤D /U« ¥O¤ /¥>iC
- “)
- i. ¥>†n-Ø §@~v< A&D /%¥q’ f†iC
- i. ¥>/%¥q,, f,,†n-Ø/£• fw,,' †yf¤“•l^a /£>t¥ f †d¥ iC
- i. A&D ¥H¥~/¥>†£«~/£ A¥,’ f,,†n-ØiC

2. ¤††, ††~

(1). A&D „q/V ¥>†£«~

- i. - i RS232C/¥> ††~ “ ,%-f f `°¶RS232C/¶>-¥d,,m’ /¥>//iC

(2). > /H,,q,£

- i. Microsoft Windows 95/ 98/ME/NT/2000•~¤††, PC/AT/<••
- i. I486DX2 33MHz, fie¥H/WCPU
- i. 12MB¥H/W O —-Ø
- i. 640 x 480¥H/W~a¥ ... fi
- i. ¥œ”—...
- i. 10MB¥H/W w”—“¶i
- i. RS232C/¶>-

(3). ¤ ¥L†n-Ø

- ‘ e¤ ¤ ¥L¥ “fa ,<h> f f •†~†n-Ø,,m (Microsoft Excel ,Word ¥) iC

(4). ~l%õu” ^

‘ ¤¥/§~l%õu ,%- • fU• /¥>»P> /H,,q,£“ §@»i’œfi //« ¥ iC
~l%õu¤¥, f “ :

/ ¥>	> /H „q ,£	~ l %õu
HF Series (D-sub 25 Pin)	RS232C (D-sub 25Pin or 9Pin)	1 „ 1 Cable D-sub 25Pin - D-sub 25Pin or 9 Pin

(5). A&D Win CT¥œ”—/ø /ø (Win CT ver.2.00)

> ...tq«Hts%ouf]w

¶ ¥	> ...tq]w
yæ (Baud Rate)¶]w	2400Bps
fPf ,d%X(Parity)¶]w	EVEN
frØf/, (Character Bit)¶]w	7Bit
-/ f/, (Stop Bit)¶]w	1Bit
† " 'l (Terminator)¶]w	CR/LF

> ...t;Ø¥X,CEfi~¶]w

¶ ¥	> ...tq]w/Lfi
fi f;~ (Format)	A&D ...—•fi f;~
;Ø¥X,CEfi~/Lfi	`%L;Ø/J/Lfi

4. tq«Hts%ou¶]l

%—• “† 5 'l ,fU+n-Ø” §@»i'œ//” ”RSKEY”¥H/ “RSCOM”
¶if tq«Hts%ou/US@

5. fU+n-Ø §@»i'œ

1). RSKEY

- i„ flS...x
- i ¥i-N/¥;>Ø¥X>p¶q,CEfi,“%—´ eª fiM,;fn-Ø// (fp:Microsoft Exce¥)iC
- i ¥i'¥ ` %L;Ø/J/Lfi ,—oª /¥;>Ø¥X>p¶q,CEfi,fA¶ eª fiM,;fn-Ø/WiC
- i ¥i,B¥; ¥ f ” ^ ¶tt,fp : Excel , Word¥iC
- i ¥i, †/¥>” GLP;Ø¥X °§@iC

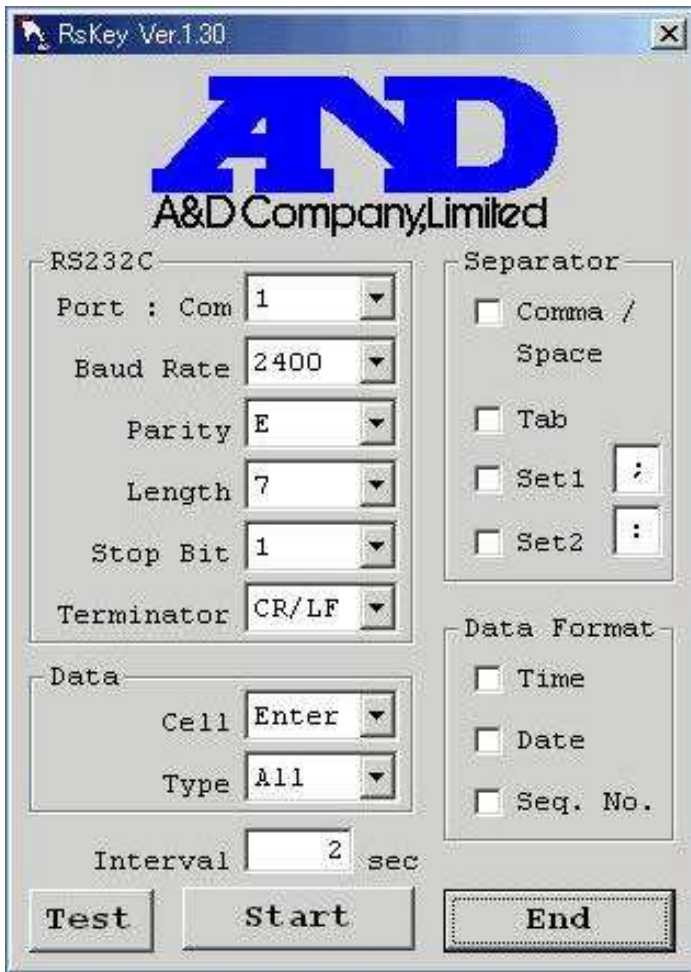
i„ §@/L“k

- 1). ; 'w,q,£ts- Y” COM »P RS232C ~l%ou- ~ fb/@ _
(ts- “” ; : COM1)
- 2). _ °,q,£¥D e>-
RSKEY_ °¶¶§ : ¶]i {§¶ i ”RSKEY
- 3). «Æ>z;RS232Cijfi fi ,“ ¥ fU¶ ¥/w¶]w' RS232CO —//(¶]w O —,m)

i jePortf

; 'w¥i tfX/§ts-

i je Baud Rate Parity Length Stop Bit Terminator
tfX/ ¥> tq«Hts%ou¶]w



ie f j/ ¥, HF ¶tfC†£«~> ...t‡]’w

¶ ¥	> ...t‡]’w
jæ (Baud Rate)‡]’w	2400Bps
fPf ,d%OX(Parity)‡]’w	EVEN
f r`Øf /, (Character Bit)‡]’w	7Bit
-/ f /, (Stop Bit)‡]’w	1Bit
† ” `l (Terminator)‡]’w	CR/LF

> ...t¿Ø¥X,œfi~‡]’w

¶ ¥	> ...t‡]’w/£fi
fi f j/ (Format)	A&D ...—•`fi f j/
¿Ø¥X,œfi~/£fi	`%L¿Ø/J/£fi

4). ‡q«H‡s%u·œ,

- ① ie Testf` ,œ, ‡s%u%u, »¶]’w>`¥¿%T\$_/S“ ¥/£fi
- ② /¥,“”fw’w...—¥ ¿O«Gfjª PRINT` ¥i“%—q/¥>¶]’ e,œfi~
- ③ %T»{p¶q>“““ ¥
- ④ ¿ „lW“”ieœfi]f` ,“ ¥ ·œ, †/F

5). _`fiM,„‡n`Ø (Microsoft Exce¥)

6). ¿Ø/J///frfi ,%—`·«“>’¿ e \$@/£fi

- 7). t,mf ,m...—
(fb ExcelU,¿ %od‡ ,‡]w f ,m...—%u
- 8). ^a RSKEYi Startj` ,fb‡ /p~//— f</ ¥>,Cefi~“<”A;C
(ie Stop RS232C u;‡“¿O• “ ¥ ¥i¥H— □ Tfi\$)
- 9). /¥>“”fw'w...—¥ ¿O«Gfj^a/¥> PRINT` «Æ¥i¶` e,Cefi~
- 10).ie Stop RS232C , †\$ ‡q«H‡s%ouf^□ > ‡B
- 11). □ ¥L¥fl %— \fU»j'œ”fie

- i„ “•N
- ① ¥>‡n~Ø L“k lf A&D ¥H¥~“”...—FORMAT °\$@;C
- ② ¥>‡n~Ø“”‡q T,Cefi~f]¥` —¥N%X\$ %sf f,‡¥H L“k¶` e,Cefi~□ ¥ f ‡n~Ø/W;C
%—“•Nfb‡q T/† ° ...—fi ,f‡¥ifl —N‡;¥ ,Cefi~¶` e¥X¥h;C
- ③ fb _ °¶¶\$` ,fb‡ /p~fi ,¿Ø/J□ ¥L‡n~Øfi > ,¥†¶•fbf,‡n~Ø¶} _/\$«Æ/~fl °\$@;C
- ④ L“k¥¿,~,«'¿` %L¿Ø/Jfi ,—//¥>“”p¶¶q †\$,Cefi~¿Ø/J ,¥□ ¿,„,¡\$ •s,Cefi~</;C
« /@/U/u\$@fC/WStop RS232C;f` , †\$ ‡q T/u\$@,»«•s%^a Interval”‡]w,Cefi~;C
- ⑤ lf f,‡n~Øfi ,¥ifl •|` \$ Caps LockM Num Lock—j\$¿ o¥”;C
- ⑥ „‡] WinCTfi ,fb—□ ¥X’...W¥[»Pt £ {f’} \$R £ °\$@;C
- ⑦ ¥>‡n~Ø L“kfPfi ¶} _ 2 > ¥H/W/u\$@ ;C
- ⑧ ¿Ø/J/// frfi ,%—’ .«“> ’¿` e \$@/Lfi

i„ ¥fl »j'œ (* “ “ .` ‡]w)

ji Start` ij

- i f,‡n~Øfb‡ /p~fi ,¥i—q/ ¥>“” RS232C — f<,Cefi~ ;C
- i — f<,Cefi~ «Æ¥ifb‡n~Ø//¿Ø/J,Cefi~ ;C
- i RS232C “”‡q«H‡s%ou† /fi ,«h« /@/U/u\$@fC“Stop RS232C;C
- i ^a [Alt] + [Tab]` ,¿ Stop RS232C;C
- i ‡q«H‡s%ou// «Æ^□ > e>— ;C

ji Endj

‡n~ØRSKEY †\$ °\$@;C

ji Testj

- “ ¥ — f<•œ, “<”A ;C
- q/ ¥> e«H,Cefi~ ,“ ,Cefi~— f<¥¿—’ ;C
- i„ §` — f<,Cefi~“”...—^D” ^ ;C
(“ST” fw'w...—i‡«h¿Q¿GS” fw'w...—i‡¿O)
- i„ ‡]w/¥>¿Ø¥X,Cefi~ , ^a ¿ “ StreamLfj ”,«h¥i¥H□~¥„q,£¥~‡i“ ¥ „ ;C

ji RS232C

„q,£/W RS232C”‡q«H‡s%ou‡]wC

ji Portj

‡s— “”‡]w (»P~l%ou‡s— COM) ;C

*1, 2, 3, 4, 5, 6, 7, 8

ji Baud Ratej

jæf]w iC

600, 1200, *2400, 4800, 9600, 14400, 19200, 28800

ji Parityj

fP f ,<d%Xf]w iC

*E (,...), 0 (_...), N (L)

ji Lengthj

fr Ø f /, f]w iC

*7, 8

ji Stop Bitj

-/ f /, f]w iC

*1, 1.5, 2

ji Terminatqj

† " 'l f]w iC

*CR/LF, CR

ji Dataj

f]w, Cefi ~ ç Ø / J / L f i i C

ji Cellj

f]w, Cefi ~ ç Ø / J « Æ "" ° § @ i C

Enter (f P End `), Right (f V ¥ k t ` `), Down (f V / U t ` `),

Auto (f ° ç Right , Down ñ) f < ¢ , Cefi ~ « Æ < h f ° , i f / U / @ f

ji Typej

ç Ø / J, Cefi ~ f]w i C

*All (¥ f i, Cefi ~), Number (. ' > ", Cefi ~)

ji Separatqj

f]w Type "" " All " fi , < h / f ¢ < q, ¢ / L f i i C

" fi / " / fr , / ç Ø / J, Cefi ~ i C

¥ i f]w Set1, Set2 / fr fi i C

Comma (r ' l), Space (, j), Tab, Set1, Set2

ji Data Formajt

f]w - f < , Cefi ~ ¥ H ¥ ~ "" O ç i C

Time (i ¶ i), Date (Ø . `), Seq. No. § (, ,)

ji Intervallj

/£“æþ]’wfi ¶i¥H¥~“”æC/@> ,æfi~ jC

fbæ /£¿¿Ø/J,æfi~fi ‘¿» >n’T’w¿Ø/J,æfi~/Uæ~¥¿ jC

¥H< < þ]’wþ f , ‘.þ]’w< 2< (þ]’w’< 0 fi ,<h¥i¿Ø/J¥ þi,æfi~) jC

i

« /¥»“ PRINT «Æ,,q,£/Wfp L“k~a¥ >p¶q>”fi ,%o—%oT»{¥H/U¶ ¥

① <O§_¥¿%oT— ~l%oØ

(~l%ou<O§_<O §“%o«? <O§_»P t%ou ,, ^ < þs— ?)

② <O§_¥¿%oTþ]’w’þq«Hþs%ouþ]’w “,æfi~¥X/Oþ]’w’?

③ „q,£þ]’w

i·ji Portj“”þ]’w»P„q,£~l%ou“ COM “”þs— <O§_< t~fX ?

i·ji Baud Rate Parity Length Stop Bit Terminatej»P/¥>

“”þq«Hþs%ouþ]’w<O§_< t~fX?

④ fPfi ¶i §@æ ¥Lþn~Øfi ,%o— t§ æ þn~Ø

⑤ — f</¥»“,æfi~fi /¥»«O«øfw’w...—f,fi <O§_’PRINT ?

⑥ %o—>«•s/·«COMþs— jC

⑦ <O§_æ~¥¿—//%o¥q’ »stj“”/¥>t£«~ ?

2). RSCOM

i„ fIS...x

1. ¥ifb> /H,,q,£//—æ /¥> °§@jC

2. ¥i-q/¥»»P RS232C¶i>—¥d// ¶i e’f<ææ,æfi~jC

3. —N~a¥ t“G¶i e’f<ææ,æfi~ ,æ^¥i«Ofs’ fi// ,¥H¿fCfL,æfi~jC

4. ¥i lf ...~f, t“G (SYæ~§ ~þs— /¥i,,æf æ t“G) jC

5. ¥ifPfi lf fiM,þn~ØjC

6. ¥i,, þ/¥»“ GLP¿Ø¥X °§@jC

i„ §@/£“k

1). —N¿ ’w,,q,£þs— Y“ COM »P RS232C ~l%ou— ~fb/@ _

(þs— “”¿ æ : COM1)

2). _ °,q,£¥D e>—

RSCOM_ °¶¶§’ : ¶i’li {fi¶i ”RSCOM

i je Portf

¿ ’w¥i tfX/§þs— jC

i je Baud Rate Parity Length Stop Bit Terminatef

tfX/¥>þq«Hþs%ou/§þ]’w jC



ie f j/ ¥, HF ¶tfC†£«~> ...tfi ‡]w

¶ ¥	> ...t‡]w
j/æ (Baud Rate)‡]w	2400Bps
fP f ,d%Ø(Parity)‡]w	EVEN
f r Ø f /, (Character Bit)‡]w	7Bit
- / f /, (Stop Bit)‡]w	1Bit
† " ' l (Terminator)‡]w	CR/LF

> ...tfi ¿Ø¥X,œfi~‡]w

¶ ¥	> ...t‡]w
fi f j / (Format)	A&D ...—•'fi f j /
¿Ø¥X,œfi~‡]w	`%L¿Ø/J‡]w

3). ie Start¶ , « ‡q«H‡s%ou¶]l iC

4). / ¥" f w'w...—¥ ¿O«Gfj^a PRINT` ¥i"%o— -q/ ¥>¶ e,œfi~ iC

5). %oT»{>p¶q>"¥ iC

6). — ,ie Command¶ , < « ¥O¶]l¶ e iC

7). ie Stop¶ , < ‡q«H‡s%ou ‡§ iC

8). ie End¶ , f, ‡n Ø RSCOM°§@ ‡§ iC

9). ¶ ¥L¥fl %o— \»i'œfi « ¥ iC

i, "•N

① ¶œ—o" ,œfi,¥ifb¿ ,lW%os¿tf¶ §.fi... fi iC

② f, ‡n Ø ¥u A¥¿' A&D ...—•"· / °§@ iC

③ fhf, if °§@fi ,%o— / « 'wfP/@> ‡s— iC

④ – §R £ WinCTfi ,fb—ª ¥x‘...W¥[»Pt £ {f’// §R £ °§@§Y ¥iC

ji, ¥fl »i'œ (fL*“ ¥ “ .`‡]w)

ji Start / Commandj

- ¯ª¥ Startfi ,»PRS232C” – ~ ,ª^‡q«H‡s%ou¶}’iC

ji End/ Stop` ij

- ¯ª¥ Endfi ,“ ¥ †§ f,‡n`ØiC

- ¯ª¥ Stopfi ,†/ RS232C‡q«H‡s%ouiC

ji Clear` ij

- fi£ O¿ //” ,œfi~iC

ji Save` ij

- «Ofs O¿ ,œfi~” fi iC

ji Print` ij

- fCfL,œfi~iC

ji RS232C

- „q,£W RS232C‡q«H‡s%ou‡]’wi(CRS232C¿¿,fb‡q«H‡s%ou¿¿fi - § ‡]’w °§@)

ji Portj

- ‡s- ”‡]’w (»P~l%ou‡s- COM)

*1, 2, 3, 4, 5, 6, 7, 8

ji Baud Rate

- j/æ‡]’w

600, 1200, *2400, 4800, 9600, 14400, 19200, 28800

ji Parityj

- fPf ,¿d%oX‡]’w

*E (, ... ~), 0 (_... ~), N (L)

ji Lengthj

- fr`Øf /,‡]’w

*7, 8

ji Stop Bitj

- -/ f /,‡]’w

*1, 1.5, 2

ji Terminatqj

- † ” `l‡]’w

*CR/LF, CR

ji Manual / Repeàtj

- ¥i/·« / ° /f °iC

j· /·«ª Repeat ‡]’wfi ¶i f °¶’ e« ¥OjCfi ¶i ¥H< < ‡]’w‡ f iC

j· /·«ª Manual ,< / °¶’ e« ¥OjC

ji Data Formāt

- ʃ]w- f,Œfi~¥H¥~"" O¿ iC
- Timefi ¶i), Date(Ø.̀), Seq. No.Œ(,,,), Command¶(e« ¥O), PU (PU¥.)
- PU« A&D "" PRINT,UTILITY,SOFTWARE

ji Received Data

- ¯a¥/w,gf<¤ ' ¶ e""Œfi~ iC

ji Command Data

- ʃ]w¶ e,Œfi~""« ¥OjC >«•sfb¿ ʃB¿ ¤ « ¥OjC
- (fb“ .ʃ]w""¿ ʃB/¥i § Command.t¶fb/¥//¿ ¤œ""« ¥O%— \
- /¥> §@»i'œfi)

i

«/¥>"" PRINT «Æ,,q,£/Wfp L“k~a¥ >p¶q>”fi ,%—%T»{¥H/U¶ ¥

- ① <OŒ_¥¿%T~ ~l%oØ
(~l%ou<OŒ_<O Œ“%o«? <OŒ_»P t%ou ,, ^ < ʃs¥¿ ?)
- ② <OŒ_¥¿%Tʃ]w“ ʃq«Hʃs%ouʃ]w” , “ ,Œfi~¥X/Oʃ]w ” ?
- ③ ,,q,£ʃ]w
i·i Portj“ʃ]w»P,,q,£l%ou"" COM ""ʃs- <OŒ_ < ʃfX ?
i· Baud Rate Parity Length Stop Bit TerminationP/¥>
""ʃq«Hʃs%ouʃ]w<OŒ_ < ʃfX?
- ④ fPfi ¶i §@fim,ʃn~Øfi ,%— ʃŒ fim,ʃn~Ø/uŒ@iC
- ⑤ ¶ e/¥,Œfi~fi /¥>""fw'w...—»x«G¿O“<”A¿jOŒ_ 'a PRINT ?
- ⑥ %o—>«•s^·«COMʃs- iC
- ⑦ <OŒ_¤¥¿ A&D /%o¥q' »sʃy""/¥>ʃŒ«~ ?



f^a fw-o“ ¥ fʃ> /%¥q

¥x¥_¥««Cfiq“F, />,¥|...

¥/¥q TEL: (02)2322-4722 FAX: (02)2392-1794

¥x/¤~ʃB TEL: (04)2378-5466 FAX: (04)2378-5467

“¶f¤~ʃB TEL: (07)552-6418 FAX: (07)552-6419